

Asessippi Cottage Cove – Cabin Style 7



**Cabin 7 not exactly as shown, see page*

Your Price Includes:

- Roads
- Underground hydro
- Waterline, treated potable water from Inglis
- 2,000 gallon holding tanks
- Ski In/out trails to resort
- Insulated foundation
- Heated crawl space
- Weeping tile
- Hot water tank

Site Works:

- Tree removal & site prep excavation for foundation
- Backfill

Services:

- We connect sewer, water & hydro.

**FULL TURN KEY
COTTAGE PACKAGE**

Exterior:

- Siding vinyl (variety available)
- Shingles – 25 yr
- Soffit
- Fascia
- Dual pane with low E argon
- Decking

Interior:

- Hardwood laminate floor (color options)
- Kitchen cabinets (style & color options)
- Gyp-rock painted walls
- Full size one piece tub unit
- Vanity, sink and toilet
- Light fixtures

Features:

- 2 Levels - 36' X 16' Main - ¾ Loft
- Plus 21" X 2' extension on main
- Front Deck 6' X 14'
- Bedrooms 2 + open loft
- Bath 1 – 4 piece

Please note all inclusions and price subject to change without notice.

Carla McLean

Phone: 204-851-5049

Email: carla@russellinn.com

Daymon Guillas

Phone: 204-773-7500

dguillas@russellinn.com





All you do is add your own appliances, furnishings and finish landscaping to our own taste. Then enjoy your front row access to Manitoba premier resort.



**interior samples, photos may vary from finished cottage.*

Cottage Life at Aseissippi

- Kayaking
- River Tubing
- Boating
- Fishing
- Hunting
- Mountain Bike trails
- Golfing (3 courses)
- Horse shoe pits

- Community Festival and events.
- Shopping & Dining at Aseissippi
- Escape
- Swimming
- Aseissippi Provincial Park
- Summer dance camp

- Downhill Skiing
- Snowboarding
- Snow Tubing
- X-country Skiing
- Hiking
- Snowshoeing
- Ice Fishing
- Snowmobiling
- Winter Escape



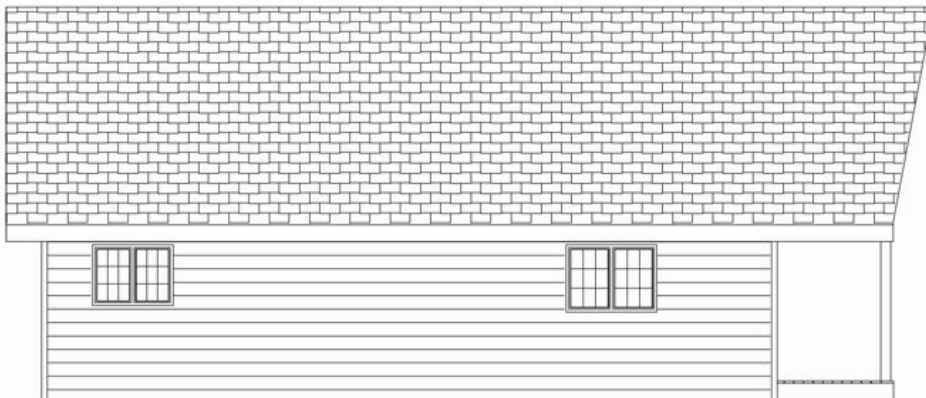
CABIN 7 ELEVATIONS



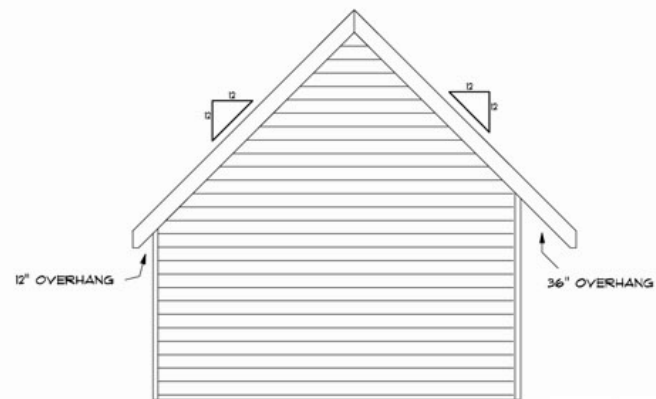
FRONT ELEVATION



RIGHT ELEVATION

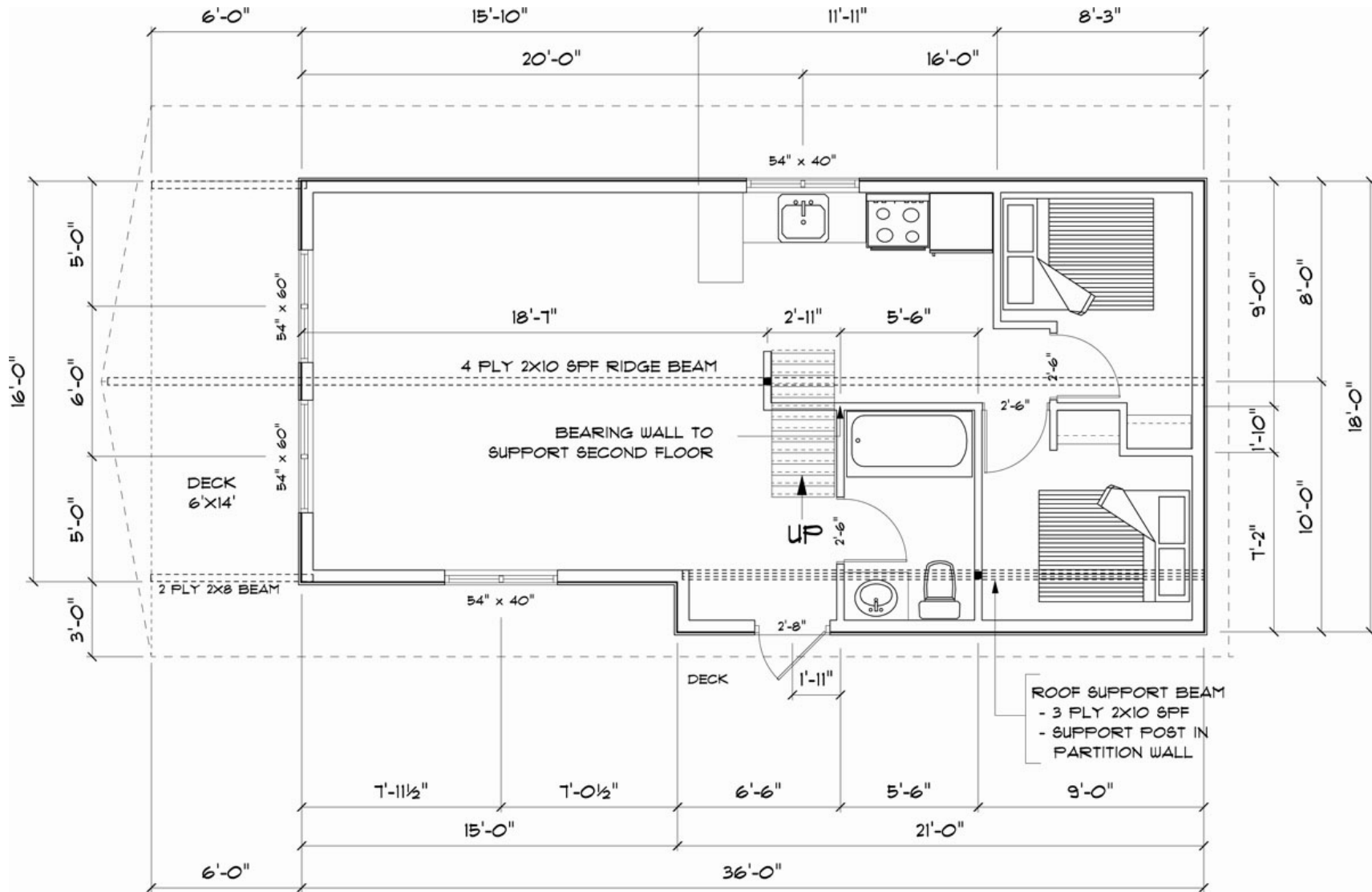


LEFT ELEVATION



BACK ELEVATION





CABIN 7

