

# Asessippi Cottage Cove – Cabin Style 4A



## Your Price Includes:

- Roads
- Underground hydro
- Waterline, treated potable water from Inglis
- 2,000 gallon holding tanks
- Ski In/out trails to resort
- Insulated foundation
- Heated crawl space
- Weeping tile
- Hot water tank

## Site Works:

- Tree removal & site prep excavation for foundation
- Backfill

## Services:

- We connect sewer, water & hydro.

## **FULL TURN KEY COTTAGE PACKAGE**

## Exterior:

- Siding vinyl (variety available)
- Shingles – 25 yr
- Soffit and Fascia
- Dual pane with low E argon
- Decking

## Interior:

- Hardwood laminate floor (color options)
- Kitchen cabinets (style & color options)
- Gyp-rock painted walls
- Full size one piece tub unit
- Vanity, sink and toilet
- Light fixtures

## Summary:

- 2 Levels 28' X 24' EACH
- Front Deck 4' X 24'
- Balcony 4' X 24'
- Bedrooms 3 upper level
- Bath 2 – 4 piece (1 on each level)
- Large living, dining and kitchen area.

*Price and inclusions subject to  
change without notice.*

**Carla McLean**

Phone: 204-851-5049

Email: carla@russellinn.com

**Daymon Guillas**

Phone: 204-773-7500

dguillas@russellinn.com



# Cottage Life at Aseissippi

- Kayaking
- River Tubing
- Boating
- Fishing
- Hunting
- Mountain Bike trails
- Golfing (3 courses)
- Horse shoe pits

- Community Festival and events.
- Shopping & Dining at Aseissippi
- Escape
- Swimming
- Aseissippi Provincial Park
- Summer dance camp

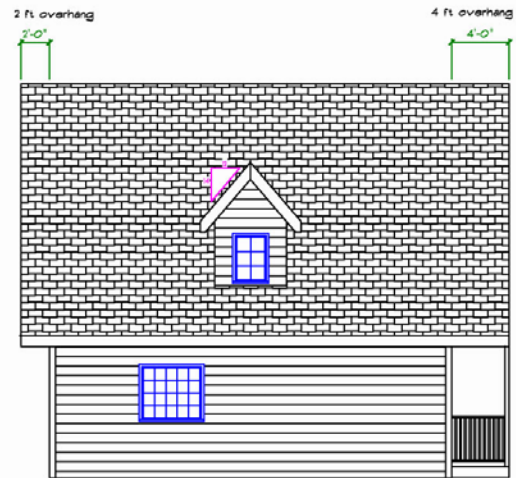
- Downhill Skiing
- Snowboarding
- Snow Tubing
- X-country Skiing
- Hiking
- Snowshoeing
- Ice Fishing
- Snowmobiling
- Winter Escape



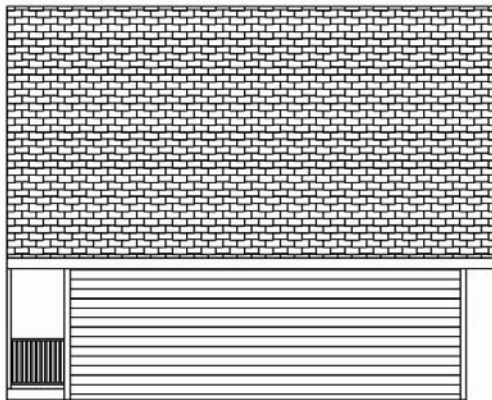
# Cabin 4A



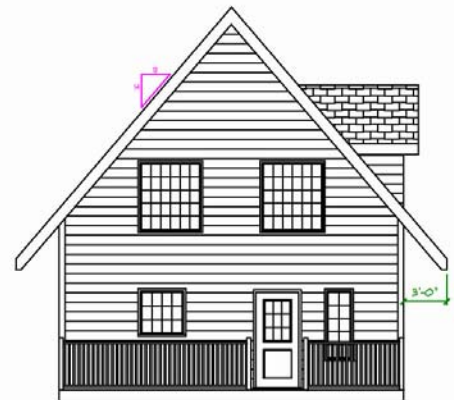
FRONT ELEVATION



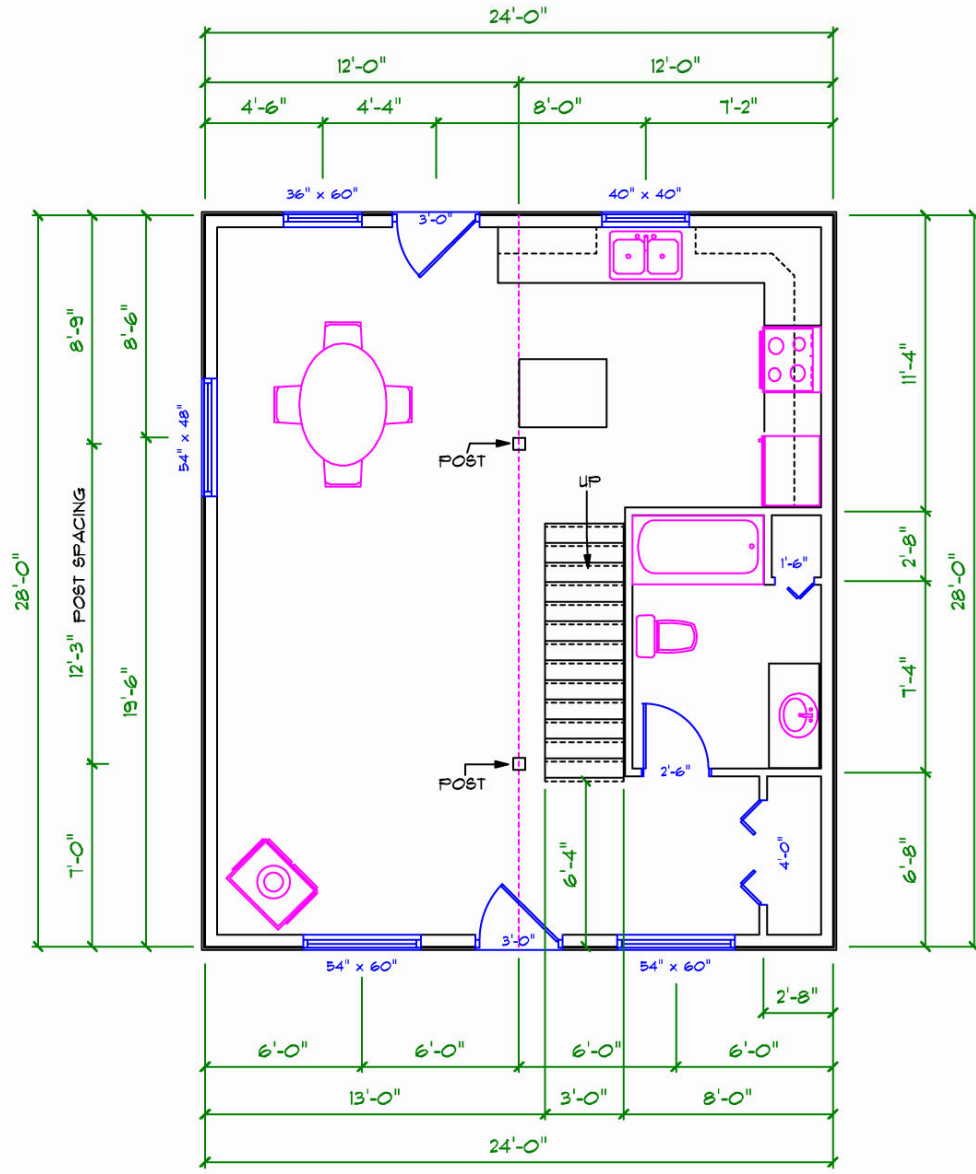
LEFT ELEVATION



RIGHT ELEVATION

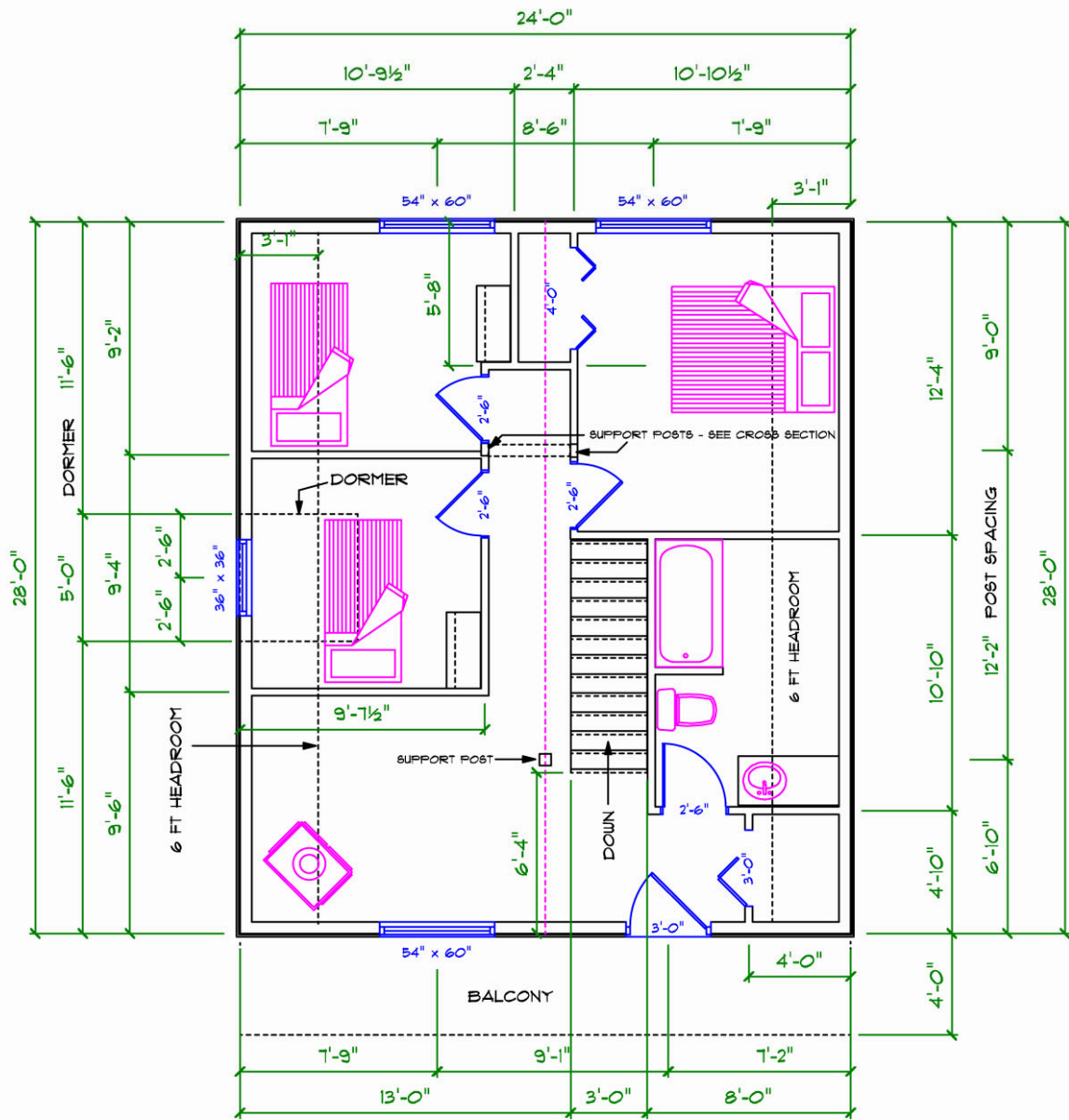


BACK ELEVATION



**CABIN 4A MAIN FLOOR**





**CABIN 4A SECOND FLOOR**